



NEORALI

***Design,
manufacture of bodywork
& industrial metal products***



2023 BOOKLET

NEORALI

565 avenue Charles de Gaulle - 88300 NEUFCHATEAU

Tel. 03 29 94 14 75

contact@neorali.fr - www.neorali.fr

Non-contractual photographs - Assembled goods - Ex works

English version
2023-1 SP



FABRIQUÉ EN
FRANCE

INDUSTRIAL METALWORK

Ultra-modern robotic machinery for improved productivity:

Able to cut sheets of metal from 4000mm x 2000mm – Steel up to 20mm thickness

Folds and handles sheets from 4000mm – Precise to 1/10th mm



2 punching machines (including one with automatic loading and unloading)



1 laser cutting center



1 robotic folding machine



5 computer assisted folding machines

NEORALI

*has chosen hot-dip galvanizing under high protection
as an outstanding anti-corrosion treatment for its products.*

Properties of continuous hot-dips galvanized metal sheets:

the core is made up of a high tensile steel.

The coating comprises 43,4% of zinc, 55% of aluminium and 1,6% of silicon.

ZINC

*The method of applying zinc ensures, among other things,
a sustainable and highly efficient protection thanks to the properties of zinc,
which corrodes before the steel.*

*When the steel is immersed in the bath of molten ZINC,
the thermal shock leads to the formation of an iron-zinc alloy
that literally bonds zinc layer to the original metal...*

The sacrificial action of zinc, because zinc sacrifices itself to the steel !

This phenomenon is known as "sacrificial cathodic protection".

ALUMINIUM

*Through the barrier effect of aluminium oxides which form naturally
on the surface of metal sheets with an aesthetic characteristic spangle
which does not tarnish.*

*An extended resistance against corrosion is guaranteed
(+2,000 hours salt spray test for aluminium and 200 hours for galvanized steel).*

SILICON

The hardness of the surface and steel-aluminium make a perfect bond.

ORGANIC COATING

*Applying a 2µ-long thermoplastic acrylic polymer film allows the surface
to be painted immediately after a light alkaline degreasing.*

SELF-REPAIRING

*The most impressive result is how paint, in the event of damage or ungalvanized parts,
the zinc will naturally. Self-repair due to the migration of zinc salts*

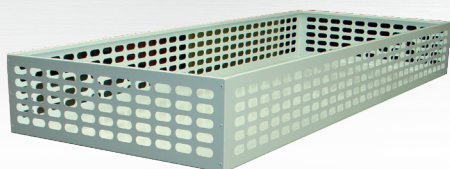
*With the utmost respect for the natural beauty of the metal,
coated with a unique silvered pattern, for lasting protection!*

CONTENTS

| | |
|---------------------------------------------------------------------|-----------------|
| Aluzinc® Jobsite tool box | 5/6 |
| Specific box | 7/8 |
| Interior box flatbed or tipper truck | 9 |
| Tool box for light payload | 10 |
| Tool box for light commercial and HGV vehicles | 11/12 |
| Underbody tool box | 13 |
| Open tarp box | 14 |
| Mesh box | 15 |
| Lifting mixed equipment box | 16 |
| Drawer box with slings/chains | 17 |
| Cross frame tool box/brackets/blocks | 18/19 |
| Forklift box | 20 |
| Box for tractor unit | 21 |
| Price request form for customized boxes | 22 |
| Customized boxes | 23/24 |
| Stabilizing pad carrier: SMELL'BOX | 25 |
| Back frame bracing: DOCK BUMPER | 26 |
| Tools holder | 27 |
| Box for jerrycan and storage units for road sign | 28 |
| Storage units for gas bottle | 29 |
| Checking gauges | 30 |
| Ventilation holes | 31 |
| Supports | 32 |
| Hardware | 33 |
| Protection guards for lights | 34 |
| Aluminium roof rack | 35 to 45 |
| Carpenter's roof rack | 46 |
| Interior glass rack / Exterior glass rack - All-purpose rack | 47 |

ALUZINC JOBSITE TOOL BOX®

- Box made of ALUZINC® 15/10 thickness
- Box section doors with anti-condensations vents
- Polyamide hinges with stainless steel
- Hinge pins fitted PVC/ZAMAC pad lockable
- Key locking system
- Mechanical door stopper
- Door frame rebate with natural rubber seal
- 1 or 2 levels of shelf supports
- Supplied with 4 fixing brackets



Ventilated basket in ALUZINC®
(height : 250 mm)



Upright (pair)
in GALVA 3mm

EXTRAS ON DEMAND

Complete exterior painting

Door painting only

Metallic or black paint

1 or 2 rows of shelves

Gratings

Ventilated basket

Upright H325 mm or H425 mm

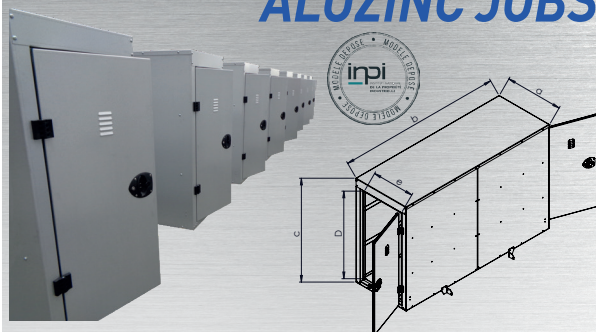
Volume
=
Rate
declining

| TALL VERSION HEIGHT(c) 1510 mm CLEARANCE(d) 1317 mm WIDTH(b) 2090 mm | | | |
|-------------------------------------------------------------------------------|--------|------|------|
| Model | Weight | a | e |
| BEC0500-2 | 125 | 503 | 330 |
| BEC0600-2 | 156 | 603 | 430 |
| BEC0700-2 | 161 | 703 | 530 |
| BEC0800-2 | 187 | 803 | 630 |
| BEC0900-2 | 199 | 903 | 730 |
| BEC01000-2 | 212 | 1003 | 830 |
| BEC01200 | 254 | 1203 | 1030 |
| BEC01400 | 279 | 1403 | 1230 |

| LOW VERSION HEIGHT(c) 910 mm CLEARANCE(d) 717 mm WIDTH(b) 2090 mm | | | |
|----------------------------------------------------------------------------|--------|-----|-----|
| Model | Weight | a | e |
| BEC0500M2 | 106 | 503 | 330 |
| BEC0600M2 | 116 | 603 | 430 |
| BEC0700M2 | 124 | 703 | 530 |
| BEC0800M2 | 135 | 803 | 630 |
| BEC0900M2 | 143 | 903 | 730 |



ALUZINC JOBSITE TOOL BOX



INTERMEDIATE BOX HEIGHT(c) 1410 mm CLEARANCE(d) 1217 mm WIDTH(b) 2090 mm

| Model | Weight | a | e |
|------------|--------|------|-----|
| BEC0500R2 | 150 | 503 | 330 |
| BEC0600R2 | 160 | 603 | 430 |
| BEC0700R2 | 173 | 703 | 530 |
| BEC0800R2 | 188 | 803 | 630 |
| BEC01000R2 | 212 | 1003 | 830 |

INTERMEDIATE BOX HEIGHT(c) 1260 mm CLEARANCE(d) 1067 mm WIDTH(b) 2005 mm

| Model | Weight | a | e |
|------------|--------|------|-----|
| BEC0500I2 | 136 | 503 | 330 |
| BEC0600I2 | 146 | 603 | 430 |
| BEC0700I2 | 157 | 703 | 530 |
| BEC0800I2 | 168 | 803 | 630 |
| BEC0900I2 | 180 | 903 | 730 |
| BEC01000I2 | 191 | 1003 | 830 |

LOW INTERMEDIATE HEIGHT(c) 910 mm CLEARANCE(d) 717 mm WIDTH(b) 2005 mm

| Model | Weight | a | e |
|------------|--------|-----|-----|
| BEC0600IM2 | 113 | 603 | 430 |

EXTRAS ON DEMAND

Complete exterior painting
Door painting only
Metallic paint
1 or 2 rows of shelves
Gratings
Ventilated basket
Upright H325 mm or H425 mm

Volume
=
Rate
declining

HIGH SHORT BOX HAUTEUR(c) 1260 mm Passage(d) 1067 mm LARGEUR(b) 1905 mm

| Modèle | Poids | a | e |
|-----------|-------|-----|-----|
| BEC0600C2 | 140 | 603 | 430 |
| BEC0800C2 | 164 | 803 | 630 |

COFFRE COURT BAS HEIGHT(c) 910 mm CLEARANCE(d) 717 mm WIDTH(b) 1905 mm

| Model | Weight | a | e |
|------------|--------|-----|-----|
| BEC0600CM2 | 108 | 603 | 430 |

JOB SITE TOOL BOX 3 mm THICK

TALL VERSION HEIGHT(c) 1510 mm CLEARANCE(d) 1317 mm WIDTH(b) 2090 mm

| Model | Weight | a | e |
|---------------|--------|------|-----|
| BECOALU600-2 | 137 | 603 | 430 |
| BECOALU800-2 | 153 | 803 | 630 |
| BECOALU1000-2 | 187 | 1003 | 830 |

INTERMEDIATE BOX HEIGHT(c) 1260 mm CLEARANCE(d) 1067 mm WIDTH(b) 2005 mm Shelves in ALUZINC®

| Model | Weight | a | e |
|--------------|--------|-----|-----|
| BECOALU600I2 | 120 | 603 | 430 |
| BECOALU800I2 | 134 | 803 | 630 |

INTERMEDIATE BOX HEIGHT(c) 1410 mm CLEARANCE(d) 1307 mm WIDTH(b) 2090 mm

| Model | Weight | a | e |
|--------------|--------|-----|-----|
| BECOALU600R2 | 137 | 606 | 414 |

LOW INTERMEDIATE HEIGHT(c) 910 mm CLEARANCE(d) 717 mm WIDTH(b) 2005 mm Shelves in ALUZINC®

| Model | Weight | a | e |
|---------------|--------|-----|-----|
| BECOALU600IM2 | 100 | 603 | 430 |

SPECIFIC BOXES

| LOW INTERMEDIATE HEIGHT(c) 910 mm CLEARANCE(d) 717 mm WIDTH(b) 2005 mm Shelves in ALUZINC® | | | |
|-----------------------------------------------------------------------------------------------------------------------------------------------------------------------------------------------------------------------------------------------|--------|-----|-----|
| Model | Weight | a | e |
| BECOALU600IM2 | 100 | 603 | 430 |
| JOB SITE TOOL BOX ALUZINC® 1.5 mm WITH A LOW SILL (D400 mm x H410 mm) | | | |
| TALL VERSION HEIGHT(c) 1510 mm CLEARANCE(d) 1317 mm WIDTH(b) 2090 mm | | | |
| Model | Weight | a | e |
| BECOSAG600 | 224 | 603 | 430 |
| BECOSAD600 | 224 | 603 | 430 |
| BECOSA800 | 253 | 803 | 630 |
| INTERMEDIATE BOX HEIGHT(c) 1260 mm CLEARANCE(d) 1067 mm WIDTH(b) 2005 mm | | | |
| Model | Weight | a | e |
| BECOSA600I | 200 | 603 | 430 |
| BECOSA800I | 228 | 803 | 630 |
| JOB SITE TOOL BOX + INTERIOR TIPPER BOX ALUZINC® 1.5 mm THICK (1 door on either side and a sloping lid door on the top) | | | |
| BECO : HEIGHT(c) 1510/1260 mm CLEARANCE(d) 1317/1067 mm WIDTH(b) 2090/2000 mm COODP : HEIGHT(c) 500 mm CLEARANCE(d) 340 mm /DEPTH 600 mm LENGTH (b) 2090/2000 mm | | | |
| Model | Weight | a | e |
| BECODP600 | 295 | 603 | 430 |
| BECODP600I | 255 | 603 | 630 |



| ALUZINC® TIPPER INTERIOR 2 mm thick 3 DOORS (1 door on either side and a sloping lid door on the top) | | | |
|--------------------------------------------------------------------------------------------------------------------------------------------|--------|-----|------|
| HEIGHT(c) 500 mm CLEARANCE(d) 340 mm / DEPTH 600 mm LENGTH (b) 1930 mm | | | |
| Model | Weight | a | e |
| COODP3P001 | 95 | 603 | 430 |
| ALUZINC® TIPPER INTERIOR (Sloping Lid door on the top, 3 hinges and 2 padlockables) | | | |
| HEIGHT(c) 800-700 mm CLEARANCE(d) 445 mm / DEPTH 600 mm LENGTH (b) 1930 mm | | | |
| Model | Weight | a | e |
| COODP004 | 86 | 600 | 1852 |



OPTIONS AND ACCESSORIES



WATER / FUEL / ADBLUE
site tank in STAINLESS STEEL /
ALUMINIUM / PVC
+ Pump motor with nozzle



Water fountain



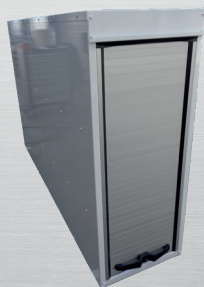
Fully extending clothes
compartment



Sliding drawer/tray
(partial or total extension
and payload capacity on request)



Side opening double-doors without center post

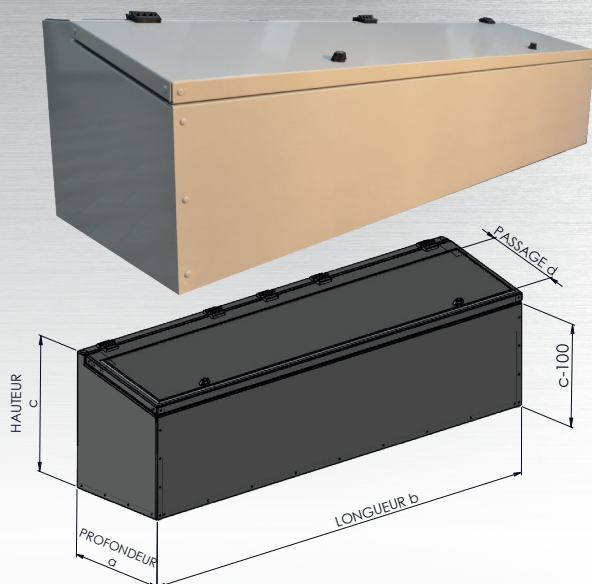


Anodised or painted aluminium roller shutter
(with double handle / bar / recessed handle...)

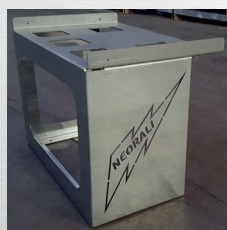


Locking bolt

INTERIOR BOX FLATBED OR TIPPER TRUCK



- Box to be placed on front Deck or Tipper
- Top opening
- Box produced from 2mm thick Steel Aluzinc® sheets
- Polyamide hinges with stainless steel hinge pins
- Quarter turn lock
- Key condemnation



Upright (pair)
in GALVA 3mm

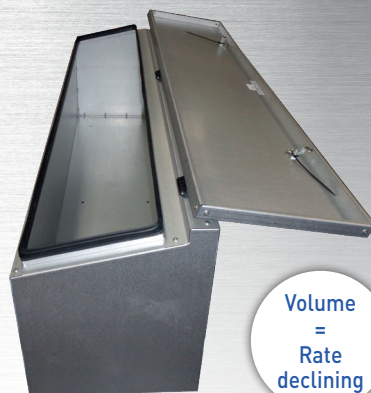
EXTRAS ON DEMAND

Complete exterior painting

Metallic paint

Gratings

Upright H325 mm or H425 mm



Volume
=
Rate
declining

INTERIOR BOX FLATBED OR TIPPER TRUCK

(100 mm slope holder)

HEIGHT(c) 500 mm
CLEARANCE(d) 327 mm
DEPTH 600 mm
LENGTH (b) 1930 mm

| Model | Weight |
|----------|--------|
| COODP001 | 85 |

HEIGHT(c) 500 mm
CLEARANCE(d) 327 mm
DEPTH 600 mm
LENGTH (b) 1798 mm

| Model | Weight |
|----------|--------|
| COODP002 | 82 |

HEIGHT(c) 600 mm
CLEARANCE(d) 327 mm
DEPTH 460 mm
LENGTH (b) 600 mm
1,5 mm THICK

| Model | Weight |
|----------|--------|
| COODP003 | 25 |



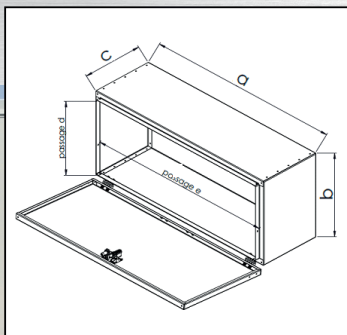
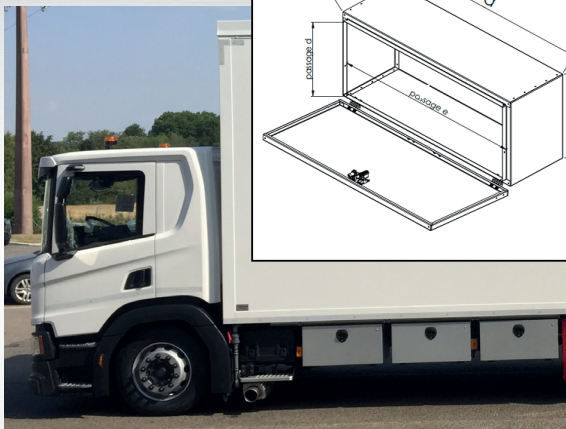
LIGHT PAYLOAD TOOL BOX

Box UTAC/CERAM approved underrun guards

Box conforms to highway code

PV n° E2 73R - 0114195

10 MIN (INSTALLATION TIME)



- Downward opening
- Box made of Aluzinc® "galva" steel sheets
- Anti-condensation vents
- Polyamide hinges with stainless steel axes
- PVC/ZAMAC locking system pad lockable
- Key locking system
- Door frame rebate with natural rubber seal
- Fixings included in the box



LIGHT PAYLOAD TOOL BOX WITH INTEGRATED SUPPORTS

HEIGHT(b) 400 mm - CLEARANCE(d) 314 mm - DEPTH(c) 500 mm

| Model | Weight | a | b | c | d | e |
|-----------|--------|------|-----|-----|-----|-----|
| CO0SB501 | 14 | 500 | 400 | 500 | 314 | 414 |
| CO0SB601 | 15 | 600 | 400 | 500 | 314 | 514 |
| CO0SB801 | 18 | 800 | 400 | 500 | 314 | 714 |
| CO0SB1001 | 22 | 1000 | 400 | 500 | 314 | 914 |

EXTRAS ON DEMAND

Complete exterior painting
Door painting only
Metallic paint
1 row of shelving (custom-made chest)



TOOL BOX FOR LIGHT COMMERCIAL VEHICLES



UTAC CERAM

- *Approved box only with our supports*
- *Downward opening*
- *Box made of Aluzinc® "galva" steel sheets*
- *Key locking system*
- *Quarter turn lock*
- *Polyamide hinges with stainless steel axes*
- *Door frame rebate with natural rubber seal*

Volume
= Rate
declining

SUPPORT

Galvanised LCV box support
with offset (the pair)
(Reference: COSU013CD - CG)



TOOL BOX FOR LIGHT COMMERCIAL VEHICLES

HEIGHT(b) 350 mm - CLEARANCE(d) 264 mm - DEPTH(c) 400 mm

| Model | Weight | a | b | c | d | e |
|-----------|--------|------|-----|-----|-----|------|
| C00SB600 | 17 | 600 | 350 | 400 | 264 | 514 |
| C00SB650 | 16 | 600 | 350 | 350 | 264 | 514 |
| C00SB800 | 20 | 800 | 350 | 400 | 264 | 714 |
| C00SB850 | 19 | 800 | 350 | 350 | 264 | 714 |
| C00SB900 | 23 | 900 | 350 | 400 | 264 | 814 |
| C00SB950 | 21 | 900 | 350 | 350 | 264 | 814 |
| C00SB1000 | 25 | 1000 | 350 | 400 | 264 | 914 |
| C00SB1050 | 23 | 1000 | 350 | 350 | 264 | 914 |
| C00SB1400 | 32 | 1400 | 350 | 400 | 264 | 1314 |
| C00SB1450 | 30 | 1400 | 350 | 350 | 264 | 1314 |

EXTRAS ON DEMAND

Complete exterior painting
Door painting only
Metallic paint
1 row of shelving (cus-
tom-made chest)



TOOL BOX FOR HGV



- *Approved box only with our supports*
- *Lined door and casing*
- *Box made of Aluzinc® “galva” steel sheets*
- *Anti-condensation vents*
- *Polyamide hinges with stainless steel axes*
- *PVC/ZAMAC locking system pad lockable*
- *Key locking system*
- *Door frame rebate with natural rubber seal*
- *Gas-assisted upward opening or downward opening*

Volume
=
Rate
declining



EXTRAS ON DEMAND

Complete exterior painting

Door painting only

Metallic paint

1 row of shelving (custom-made chest)

UTAC CERAM

SUPPORTS

Galvanised support for HGV

tool box - Ref. SBSU046-G

Side supports COOF

(the pair)

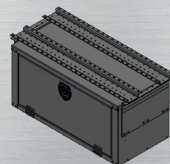
(2 omégas + 2 laterals supports)

Ref. COSU117 oméga

L=1075

Ref. COSU118 oméga

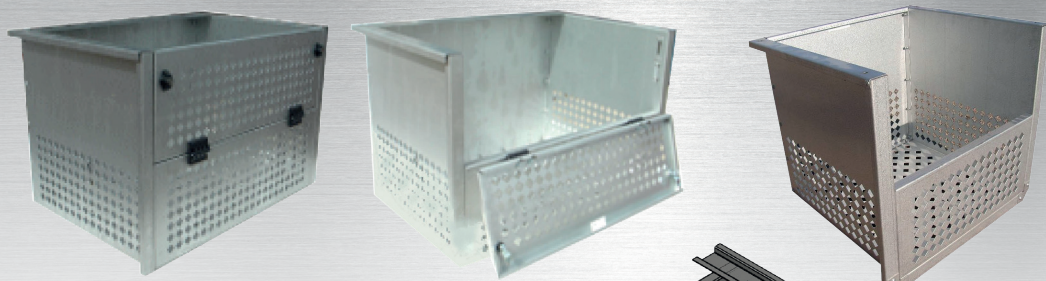
L=3000



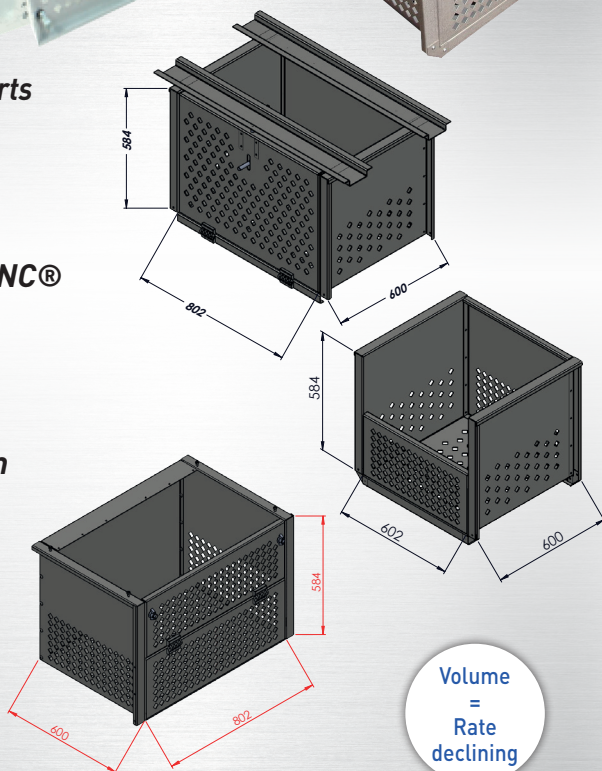
| TOOL BOX FOR HGV | | | | | | | |
|----------------------------------------------------------|--------|---------|------|-----|-----|-----|------|
| HEIGHT(b) 490 mm - CLEARANCE(d) 354 mm - DEPTH(c) 483 mm | | | | | | | |
| Model | Weight | Opening | a | b | c | d | e |
| COOFB600 | 25 | Low | 600 | 490 | 483 | 354 | 427 |
| COOFB602 shelf | 29 | Low | 600 | 490 | 483 | 354 | 427 |
| COOFB603 shelf + chain | 30 | Low | 600 | 490 | 483 | 354 | 427 |
| COOFH600 | 26 | High | 600 | 490 | 483 | 354 | 427 |
| COOFB800 | 31 | Low | 800 | 490 | 483 | 354 | 627 |
| COOFB802 shelf | 35 | Low | 800 | 490 | 483 | 354 | 627 |
| COOFB803 shelf + chain | 36 | High | 800 | 490 | 483 | 354 | 627 |
| COOFH800 | 32 | High | 800 | 490 | 483 | 354 | 627 |
| COOFB1000 | 38 | Low | 1000 | 490 | 483 | 354 | 827 |
| COOFH1000 | 39 | High | 1000 | 490 | 483 | 354 | 827 |
| COOFB1200 | 43 | Low | 1200 | 490 | 483 | 354 | 1027 |
| COOFH1200 | 44 | High | 1200 | 490 | 483 | 354 | 1027 |
| COOFB1500 | 51 | Low | 1444 | 490 | 483 | 354 | 1271 |
| COOFH1500 | 52 | High | 1444 | 490 | 483 | 354 | 1271 |



UNDERBODY TOOL BOX



- *Approved box only with our supports*
- *Underbody tool box with complete opening*
- *Box made of galvanised ALUZINC® 20/10*
- *20mm X 20mm square holes*
- *Flush-mounted locking system*
- *Polyamide hinges with stainless steel axes*
- *Spring lock gate*

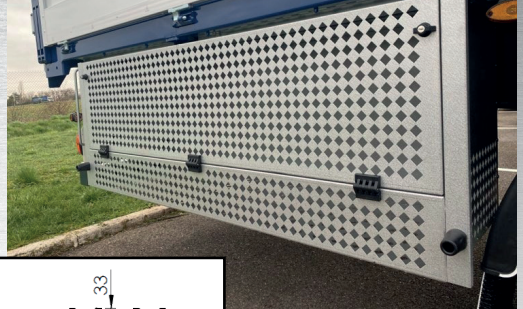
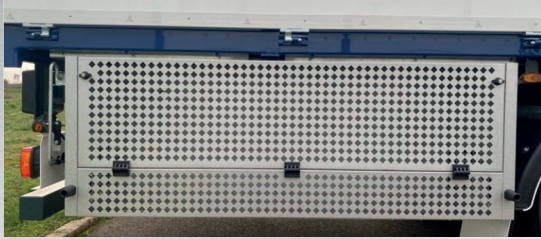


 **UTAC CERAM**

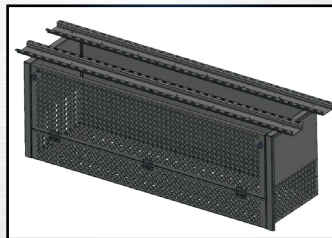
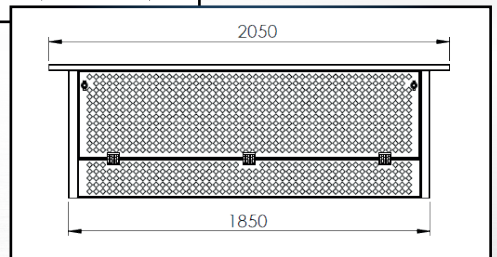
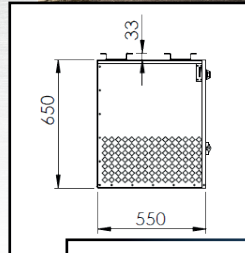
Volume
= Rate
declining

| UNDERBODY TOOL BOX | | | |
|------------------------------|--------|--------------|--------|
| HEIGHT 584 mm - DEPTH 600 mm | | | |
| Model | Weight | | Lenght |
| SBC0009 | 46 | WITH DOOR | 802 |
| SBC0018 | 26 | WITHOUT DOOR | 602 |
| PGC0020 | 35 | HALF DOOR | 802 |

OPEN TARP BOX

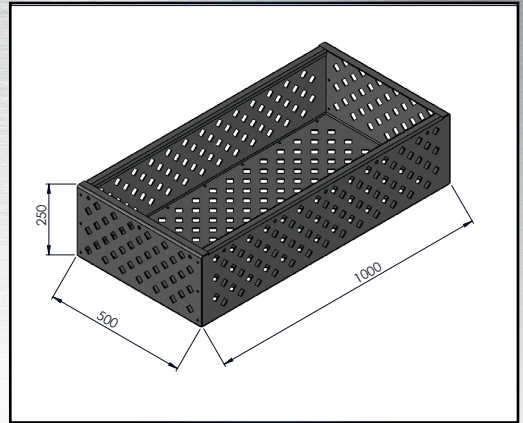


- Box made of galvanised ALUZINC® 20mm x 20mm square holes
- Polyamide hinges with stainless steel axes
- Butterfly locking system
- Door opens downwards over parts of its height
- Recommended position = on the rear overhang

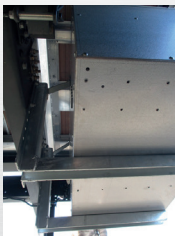


| OPEN TARP BOX | | | | |
|-----------------------------------------------|--------|--------|--------|-------|
| HEIGHT 650 mm - DEPTH 550 mm - LENGTH 1850 mm | | | | |
| Model | Weight | Length | Height | Depth |
| COCA001 | 86 | 1850 | 650 | 550 |

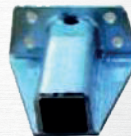
MESH BOX



- **Approved box only with our supports**
- **Mesh box for slings/nets**
- **Box made of galvanised steel 30/10**
- **20mm x 20mm square holes**



SBSU046-G



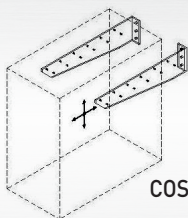
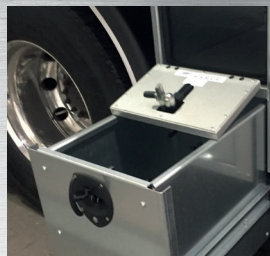
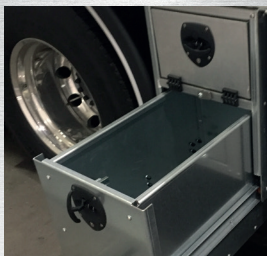
SBSU054B

 **UTAC CERAM**

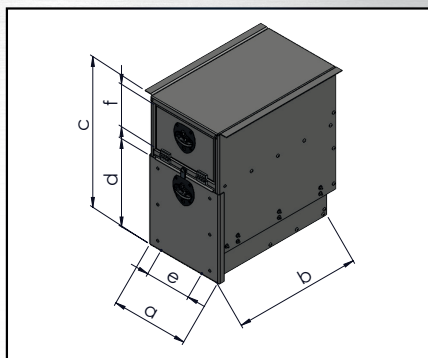
| MESH BOX | | | | |
|------------------------------------------------------|--------|---------------------------------|--------|-------|
| HEIGHT(c) 250 mm - DEPTH 500 mm - LENGTH (b) 1000 mm | | | | |
| Model | Weight | Length | Height | Depth |
| SBC0026 | 30 | 1000 | 250 | 500 |
| SBSU046-G | 12.7 | HGV box support | | |
| SBSU054S | 2 | HGV box support to be welded | | |
| SBSU054B | 2 | HGV box support to be bolted on | | |

Volume
= Rate
declining

MIXED LIFTING EQUIPMENT BOX



COSU020 - D&G



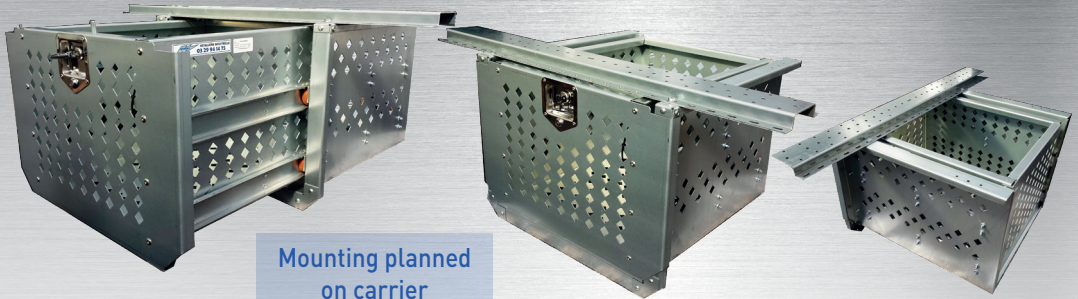
- **Approved box only with our supports**
- **Box drawer for slings (90/130 liters)**
- **Box for straps (60/90 liters)**
- **Box made of galvanised steel 20/10**
- **Pad lockable flush-mounted lock in PVC/ZAMAC**
- **Key locking system**
- **Roller slides with 120 kg maximum payload**
- **Box with a maximum payload of 220 kg**

 **UTAC CERAM**

| MIXED LIFTING EQUIPMENT BOX | | | | | | |
|-----------------------------------------------------|--------|------------------------------------|--------------|--------|---------------|-------|
| LENGTH 390 ou 590 mm - DEPTH 674 mm - HEIGHT 735 mm | | | | | | |
| Model | Weight | Width | Useful width | Height | Useful height | Depth |
| PGC0100 | 76 | 390 | 286 / 290 | 735 | 185 / 430 | 674 |
| PGC0120 | 95 | 590 | 486 / 490 | 735 | 185 / 430 | 674 |
| COSU020 D&G | 11 | The set of hot galvanized supports | | | | |

Volume
=
Rate
declining

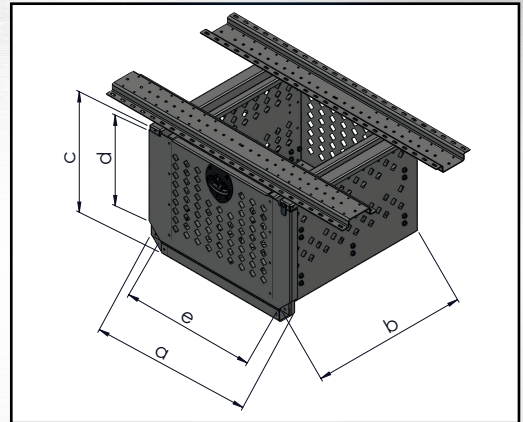
UNDERBODY DRAWER BOX



Mounting planned
on carrier
and installation kit



- **Approved box only with our supports**
- **Underbody drawer box**
- **Galvanised steel box 20/10**
- **20mm X 20mm square holes**
- **PVC/ZAMAC locking system pad lockable**
- **1 or 2 levels of runners**



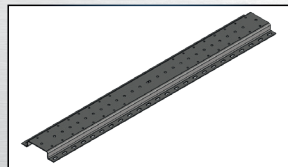
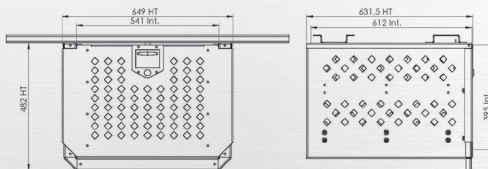
SUPPORTS

OMEGA supports

for heavy loads

Length : 1075 mm / th. : 4 mm

Reference SBSU059



OMEGA supports

for heavy loads long

Length : 3000 mm / th. : 4 mm

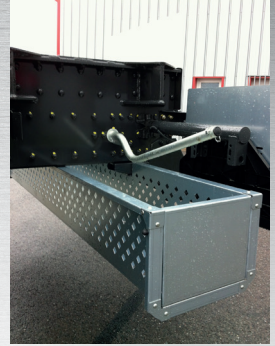
Reference SBSU059L

| UNDERBODY DRAWER BOX | | | | | | | |
|-------------------------------------------------------|--------|-------------|-------|--------------|--------|---------------|-------|
| WIDTH(a) 650 mm - HEIGHT(b) 482 mm - DEPTH (c) 630 mm | | | | | | | |
| Model | Weight | Max payload | Width | Useful Width | Height | Useful Height | Depth |
| PGC0050 | 57 | 120 | 650 | 430 | 482 | 400 | 630 |
| PGC0060 | 60 | 300 | 650 | 430 | 482 | 400 | 630 |

Volume
=
Rate
declining



TRANSVERSE TOOL BOX

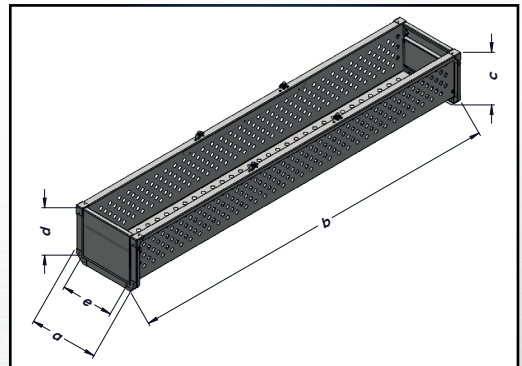


Mounting planned on carrier or semi truck

Trademarks already referenced:

Krone / Lecitrailer / Kassbohrer / Schmitz / Fruehauf / Fliegl / Leciñena

- **Box made of galvanised steel ALUZINC® 20/10**
- **Box for wedges and brackets**
- **Openings on each side with automatic locking**
- **20mm x 20mm square holes**
- **Cross fixings in the rear overhang**
- **Delivered with its mounting flanges**



The tool box cannot replace the cyclist security rail

Compatible with a lifetable cyclist security rail

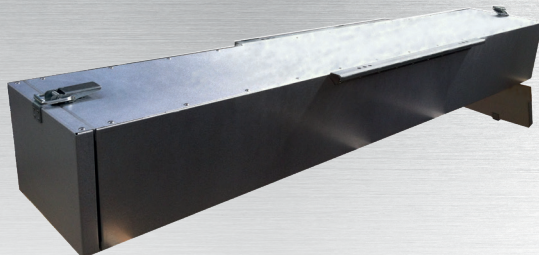
Recommended position = on the rear overhang

| TRANSVERSE TOOL BOX | | | | | | | |
|----------------------------------------------------------------------|--------|-------|------------------|--------|-------------------|--------|---------------|
| HEIGHT © 350 mm - LENGTH (b)2445, 2375 ou 2260 mm - WIDTH (a) 450 mm | | | | | | | |
| Model | Weight | Width | Useful Width (e) | Height | Useful height (d) | Lenght | Useful length |
| COEQ0100 | 55 | 450 | 350 | 350 | 300 | 2375 | 2310 |
| COEQ0300 | 52 | 450 | 350 | 350 | 300 | 2260 | 2195 |
| COEQ0100S | 45 | 450 | 350 | 350 | 300 | 2375 | 2310 |
| COEQ0500 | 49 | 450 | 350 | 350 | 300 | 2445 | 2440 |
| COEQ0500S | 45 | 450 | 350 | 350 | 300 | 2445 | 2440 |

Volume
= Rate
declining

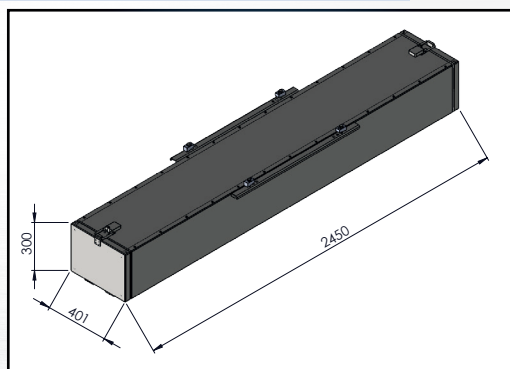


ENCLOSED BRACKET BOX



Mounting planned on carrier or semi truck
Trademarks already referenced:
Lecitrailer / Kassbohrer / Krone / Schmitz / Fruehauf / Fliegl / Leciñena

- **Box made of Aluzinc® 15/10 thick**
- **Box for wedges and brackets**
- **Door on each end**
- **Latch fasteners**
- **Water drainage holes**
- **Cross fixings in the rear overhang**
- **Integrated supports**



The tool box cannot replace the cyclist security rail
Compatible with a lifetable cyclist security rail
Recommended position = on the rear overhang

| ENCLOSED BRACKET BOX | | | | | | | |
|-----------------------------------------------|--------|-------|--------------|--------|---------------|--------|---------------|
| HEIGHT 300 mm - LENGHT 2450 mm - WIDTH 400 mm | | | | | | | |
| Model | Weight | Width | Useful width | Height | Useful Height | Length | Useful Length |
| COEQ0400 | 56 | 400 | 330 | 300 | 230 | 2450 | 2362 |
| COEQ0400S | 65 | 400 | 330 | 300 | 230 | 2450 | 2362 |

Volume
=
Rate
declining

FORKLIFT BOX



Mounting planned on carrier or semi truck.

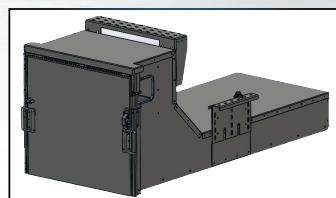
Trademarks already referenced:

Schmitz / Krone / Fruehauf / Kassbohrer / Lecitrailer / Leciñena / Fliegl

ADVANTAGES

Ergonomic tool box
Handle on the left or on the right

- **Approved box only with our supports**
- **Box made of Aluzinc® 15/10 thick**
- **Access ramp integrated into the door**
- **Hinges with lubricator in zinc plated steel**
- **Butterfly locks and spring-loaded handles**
- **Key locking system**
- **Supplied with supports and fixings**
- **Example of compatible semi-electric forklift : HLP152 and Ameise**



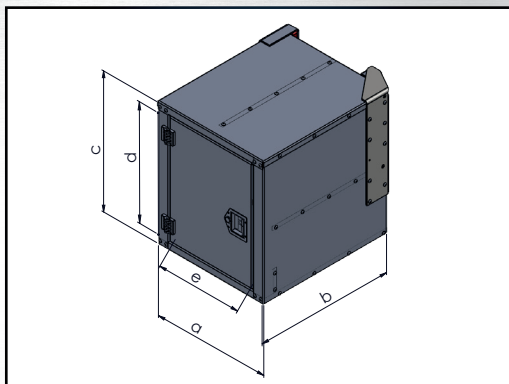
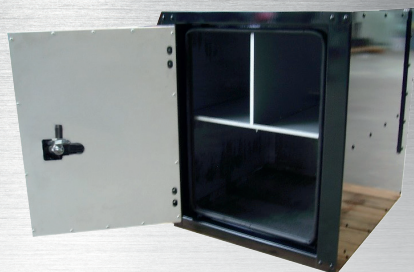
 **UTAC CERAM**

| FORKLIFT BOX | | | | |
|-----------------------------------------------------------------------------------------------------------------------------------|--------|-------|--------|-------|
| HEIGHT 679 mm - DEPTH 1606 mm - WIDTH 733 mm | | | | |
| Model | Weight | Width | Height | Depth |
| PGC0030R/RD/RG Ramp (neutral version or handle on the right or handle on the left) | 98 | 733 | 679 | 1606 |
| PGC0030RS/RDS/RGS Ramp (neutral version or handle on the right or handle on the left - semi Schmitz) | 100 | 733 | 679 | 1606 |
| PGC0030RSR/RDSR/RGSR Ramp (neutral version or handle on the right or handle on the left - semi Krone, Fruehauf, Kassbohrer...) | 100 | 733 | 679 | 1606 |
| PGC0030P Side door (version handle on the right or handle on the left) | 95 | 733 | 679 | 1606 |
| SEMI ELECTRIC FORKLIFT BOX | | | | |
| HEIGHT 750 mm - DEPTH 1651 mm - WIDTH 733 mm | | | | |
| PGC0150R/RD/RG Ramp (neutral version or handle on the right or handle on the left) | 93 | 733 | 750 | 1651 |
| PGC0150RS/RDS/RGS Ramp (neutral version or handle on the right or handle on the left - semi Schmitz) | 100 | 733 | 750 | 1651 |
| PGC0150RSR/RDSR/RGSR Ramp (neutral version or handle on the right or handle on the left - semi Krone, Fruehauf, Kassbohrer...) | 100 | 733 | 750 | 1651 |
| PGC0150P/PG/PD Side door (version handle on the left or handle on the right) | 100 | 733 | 750 | 1651 |

**Possibility
of support
by the CARSAT
up to 50%
of the purchase
price**

Volume
=
Rate
declining

TRACTOR UNIT TOOL BOX



 **UTAC CERAM**

- **Approved box only with our supports**
- **Box made of steel Aluzinc® 15/10 thick**
- **Side opening**
- **Anti-condensation vents**
- **Polyamide hinges with stainless steel hinge pins**
- **Flush mountain pad lockable PVC/ZAMAC**
- **Key locking system**
- **Door frame rebate with natural rubber anodised**
- **Integrated rear supports for each tractor unit model**
- **1 row of shelf with divider**

| TOOLBOX WITH FRONT LATERAL OPENING | | | | | | | |
|----------------------------------------------------------|-------|--------|-----|-----|-----|-----|-----|
| HEIGHT(b) 700 mm - CLEARANCE(d) 422 mm - DEPTH(c) 704 mm | | | | | | | |
| Model | For: | Weight | a | b | c | d | e |
| C00FL600 | MAN | 80 | 600 | 700 | 704 | 422 | 565 |
| C00FL601 | VOLVO | 80 | 600 | 700 | 704 | 422 | 565 |

Volume
= Rate
declining

Price request for made-to-measure tool boxes

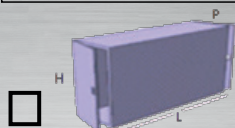
Company : _____

Contact : _____

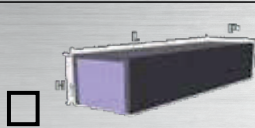
Telephone number : _____

Email address : _____

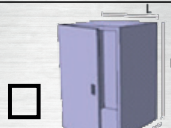
(or company stamp)



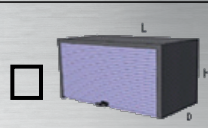
1 door on each side



On each end
1 roller shutter



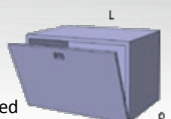
1 door



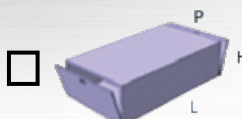
1 roller shutter

☐
Lid for LCV

☐
Flush mounted
door HGV



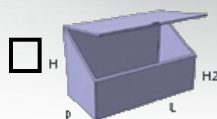
1 door



1 door on each side



1 double door
side opening



1 sloped lid

Other specifications according to requirements : _____
(ex : mesh box, bracket box, lowered sill(s), pallet truck...)

Quantity : _____

Lead time : ____/____/____

Dimensions : (L)_____x(H)_____x(H2)_____x(D)_____

Options :

☐ Shelves

number : _____ / position : _____

☐ Divider

number : _____ / position : _____

☐ Duckboards

☐ Fully painted exterior

☐ Door painted

Materials :

☐ Galvanised ALUZINC® ☐ 15/10th ☐ 20/10th

☐ ALUMINIUM ☐ 20/10th ☐ 30/10th

☐ INOX 15/10th

Comments : _____

Date : ____/____/____

Signature :



MADE-TO-MEASURE BOXES

*Please call to ask us about all your requirement
for made to measure boxes!*



Cut side box + drawers
+ roller shutter
with double handle



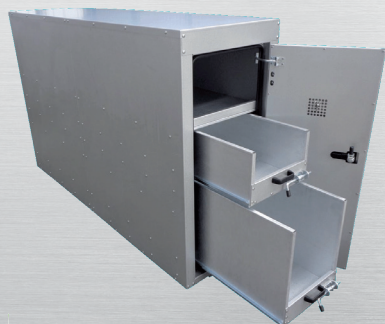
3 points locking box



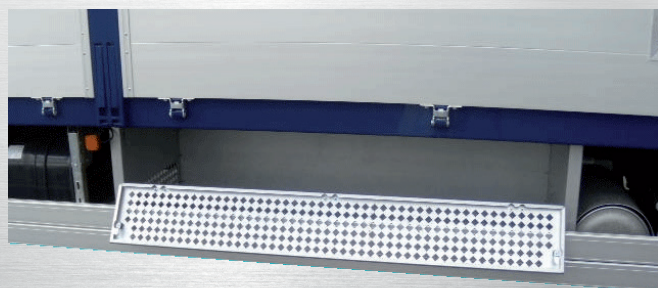
Double door box with side opening
+ specific shape + sliding tray



Lowered threshold box + 2 locks per door



Box of drawers with higher side edges



Underbody tool box

Construction of your choice

Aluzinc®, Aluminium, stainless steel

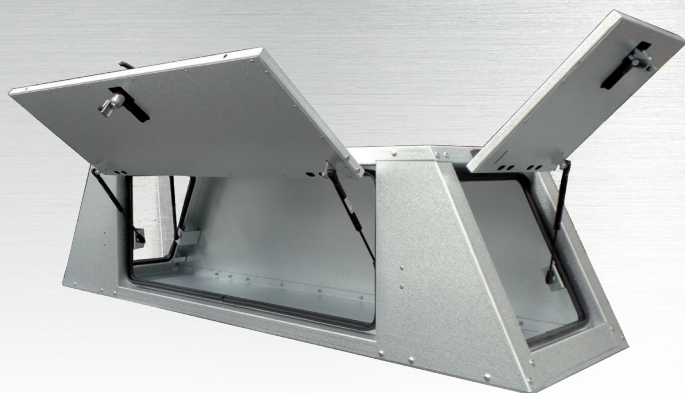
Your choice of options:

***Fully painted box,
painted door only,
shelf, drawer etc...***

***As manufacturers
we can respond to all your needs***

MADE-TO-MEASURE BOXES

Example of customized box



Box 3 doors specific shapes



Box with specific shapes



Box back cab roof in checkerboard aluminium
+ roller shutter with recessed handles

STABILIZING PAD HOLDER : SMEL'BOX

Multi-position round or square pad holder box
Ease of transport and storage!



THE SMEL'BOX

- Single or double with collar clamp
- Single chassis fixture
- Single, removable
- Multi-position

APPEARANCE

Brut Aluzinc®

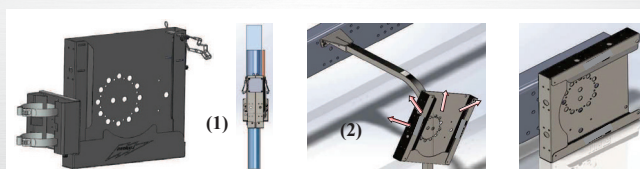
Attractive surface appearance, close to anodised aluminium.



FITTING THE SMEL'BOX ON TO HYDRAULIC STABILISING CYLINDER:

The use of clamp collars (86-91mm or 104-112mm diameter) enables them to fit all stabiliser diameters. Depending upon the type and space available for movement and rotation, the SMEL'BOX responds to all configurations due to its multipositioning capacity.

Position on the hydraulic stabilizing cylinder (1) or on the chassis (2)



| SMEL'BOX (pad of 400x400 useful dimensions l412 x H404 x P57) | |
|---------------------------------------------------------------|--------------------------------------------------------------------|
| Model | Description |
| SMBR102 | Single SMEL'BOX kit with clamp for hydraulic cylinder (86-91 mm) |
| SMBR103 | Single SMEL'BOX kit with clamp for hydraulic cylinder (104-112 mm) |
| SMBR202 | Double SMEL'BOX kit with clamp for hydraulic cylinder (86-91 mm) |
| SMBR203 | Double SMEL'BOX kit with clamp for hydraulic cylinder (104-112 mm) |
| SMCH100 | Single SMEL'BOX chassis mounted kit |
| SMDE100 | Single SMEL'BOX chassis mounted kit |
| SMEL'BOX (pad of 500x500 useful dimensions l512 x H504 x P57) | |
| SMBR102-5 | SMEL'BOX kit with clamp (86-91 mm) skid of 500 mm |
| SMBR103-5 | Single Smel'Box kit with clamp (104-112 mm) skid of 500 mm |

Volume
=
Rate
declining

REAR FRAME REINFORCEMENT : DOCK BUMPER



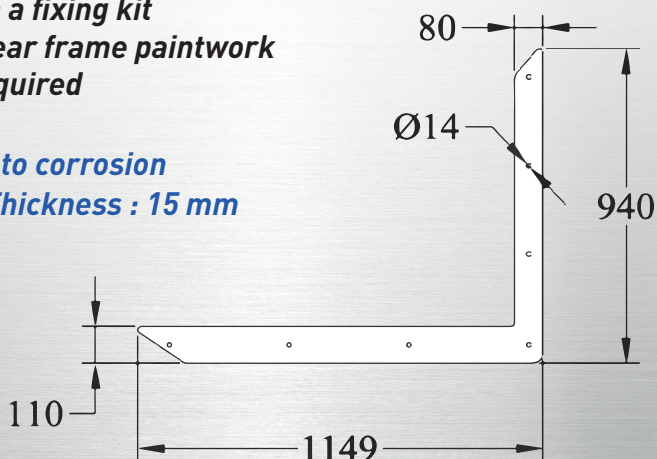
GALVANISED STEEL

- Avoids damage to the rear frame in the case of impact
- Quick installation without welding
- Delivered with a fixing kit
- Protects the rear frame paintwork
- No welding required

High resistance to corrosion

Weight : 25 Kg Thickness : 15 mm

Volume
=
Rate
declining



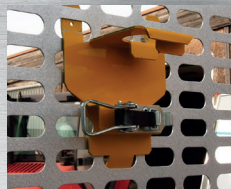
| DOCK - BUMPER | | | |
|---------------|--------|--------|--------|
| Model | Weight | Length | Height |
| AMBU004 | 25 | 1149 | 940 |

TOOLS HOLDER AND CONES HOLDER

TOOLS HOLDER



- Made of Aluzinc® sheet metal
- Locks under tension from naturel rubber strap
- Quick tension hook
- Insertion from front panel clip or by bolts
- Yellow color = standard, raw on request



CONES HOLDER



- Made of tubular «GALVA»
- Cone holder with antiluce pin
- Bolts on
- Fixes on to the chassis and subframe

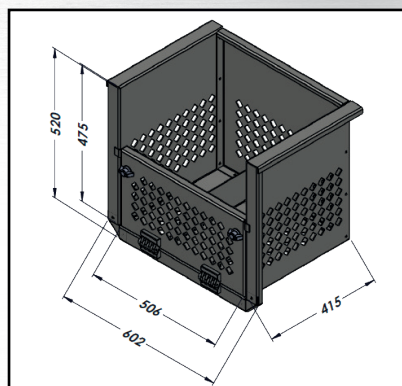


| TOOL HOLDER | | |
|-------------|--------|--------------|
| Model | Weight | Description |
| BEOPT027 | 1 | Tools holder |
| AMSU029 | 2 | Cones holder |

BOX FOR JERRYCAN & STORAGE UNITS

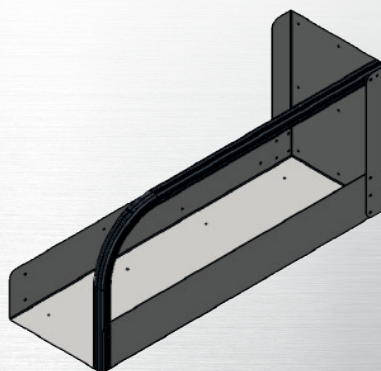
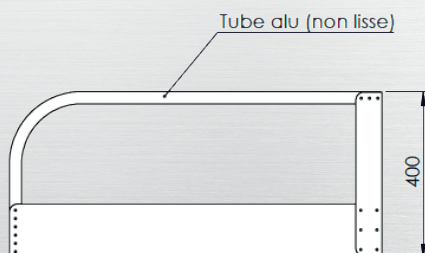
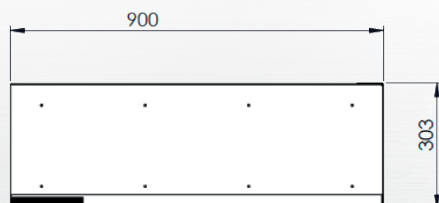
BOX FOR JERRYCAN

- Box made of ALUZINC® 20/10 thick
- 20mm x 20mm square holes
- Butterfly locks
and spring-loaded handles
- Key locking system
- Polyamide hinges with stainless steel axes
- Width of the compartment = 167 mm



STORAGE UNITS FOR ROAD SIGN SDPI100

- Storage made of ALUZINC® 15/10 thick

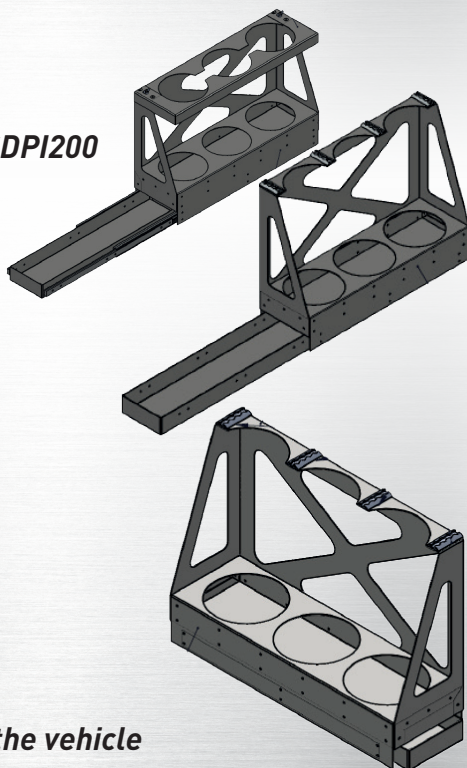
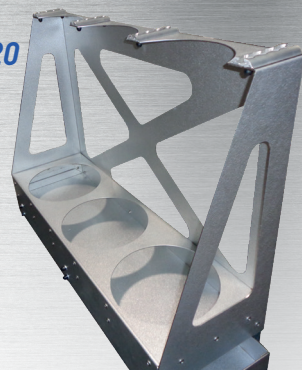


| BOX FOR JERRYCAN | | | | |
|------------------------|--------|-------|--------|--------|
| Model | Weight | Width | Height | Length |
| COJE100 | 42 | 602 | 520 | 415 |
| STORAGE UNITS FOR ROAD | | | | |
| Model | Weight | Width | Height | Length |
| SDPI100 | 9 | 900 | 400 | 303 |

STORAGE UNITS FOR GAS BOTTLE

STORAGE UNITS FOR GAS BOTTLE SDPI200 AND SDPI220

- Slides under to move the structure for easy storage
- Can accommodate fire extinguishers according to diameter and height
- Bottle storage space = 250 mm
- Aero-rails for strapping bottles
- Opening to the left
- Recommended installation: at the rear of the vehicle
- SDPI220 specifications version
 - Lock to close the sliding part
 - Reverse opening compared to the SDPI200 (opening to the right)
 - 15 mm elevation



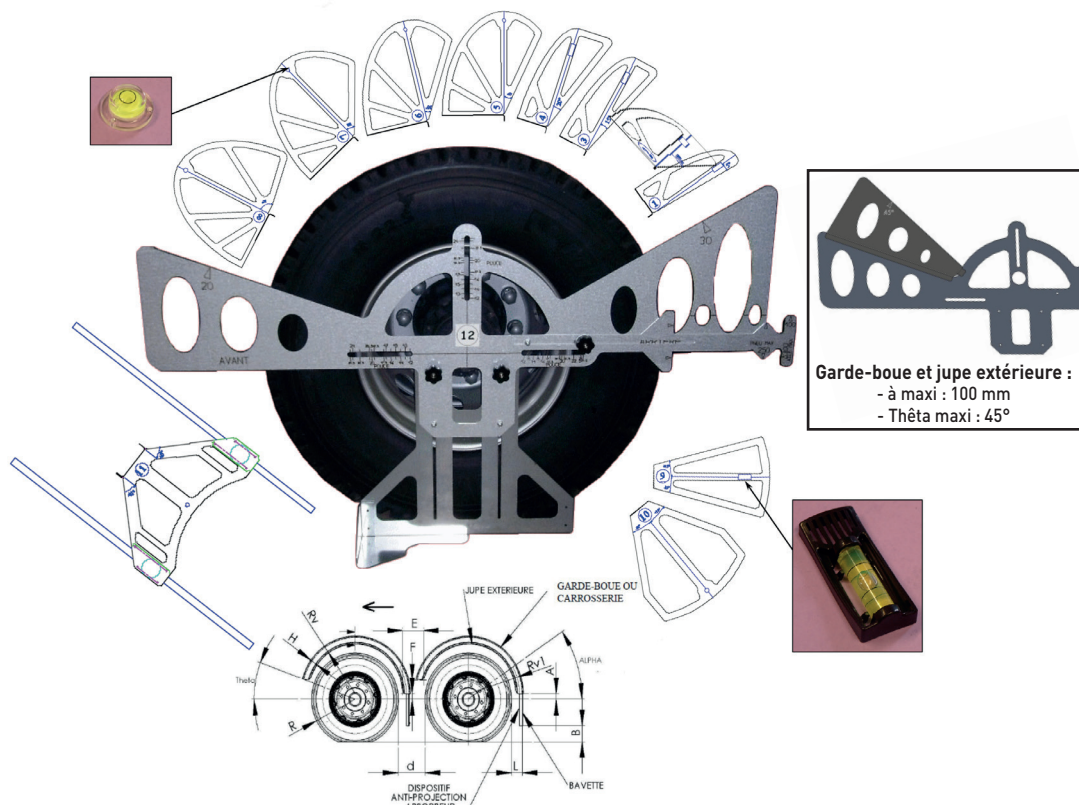
STORAGE UNITS FOR GAS BOTTLE SDPI210

- Storage made of ALUZINC® 20/10 thick
- Slides under to move the structure for easy storage
- Can accommodate fire extinguishers according to diameter and height
- Bottle storage space = 210 mm
- Removable part with butterfly nuts to hold the bottles in place
- Opening to the right
- Recommended installation: at the rear of the vehicle

STORAGE UNITS FOR GAS BOTTLE

| Model | Weight | Width | Height | Length |
|---------|--------|-------|--------|--------|
| SDPI200 | 29 | 910 | 686 | 283 |
| SDPI210 | 28 | 850 | 570 | 255 |
| SDPI220 | 30 | 910 | 691 | 285 |

INSPECTION GAUGES



COMPLY WITH REGULATIONS

- Inspection gauges for the positioning of wings and anti-projectile systems
- Inspection gauges for the visibility of rear lights
- Inspection gauges for the visibility of side lights
- Inspection gauges for the license plates
- Inspection gauges for the retro-reflecting plate

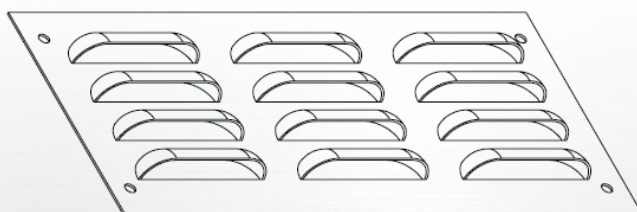
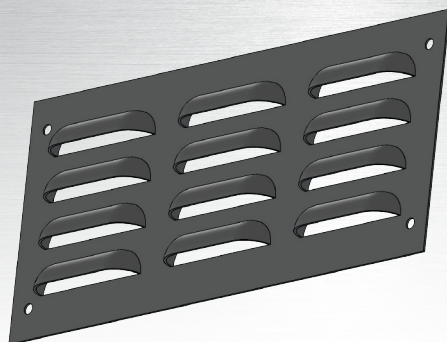
*For further information ask our brochure:
inspection gauges, qualified operator.*

| PACK OF 13 INSPECTION GAUGES | |
|------------------------------|--------|
| Model | Weight |
| GAOQ000 | 80 |

VENTILATION HOLES

Vents made of ALUZINC® or stainless steel

Predisposition of drilling



| AIR VENTS | | | | | |
|-----------|---------|--------|--------|-------|-----------------|
| Model | Version | Vents | Length | Width | Material |
| AMGR001 | Riveted | 3 x 4 | 255 | 115 | ALUZINC® |
| AMGR002 | Riveted | 2 x 4 | 175 | 115 | ALUZINC® |
| AMGR003 | Riveted | 1 x 4 | 95 | 115 | ALUZINC® |
| AMGR004 | Riveted | 1 x 4 | 115 | 115 | ALUZINC® |
| AMGR005 | Riveted | 1 x 18 | 100 | 430 | ALUZINC® |
| AMGR006 | Riveted | 1 x 6 | 127 | 115 | Stainless steel |
| AMGR011 | Riveted | 4 x 8 | 235 | 350 | ALUZINC® |
| AMGR019 | Riveted | 9 x 4 | 750 | 115 | ALUZINC® |

SUPPORTS



SBSU001-03



SBSU002



SBSU036

| APPROVED UNDERRUN BAR BRACKETS | |
|---------------------------------------------------|--------------------------------------------------|
| BAE on request | |
| HEIGHT(c) 250mm - DEPTH 500mm - LENGTH (b) 1000mm | |
| Model | Description |
| SBSU001 | Side security bar bracket small model L: 395 mm |
| SBSU002 | Side security bar bracket small model L: 750 mm |
| SBSU003 | Side security bar bracket medium model L: 495 mm |
| SBSU036 | Side security bar bracket |



SBSU039



SBSU040



SBSU049



SBSU049P



SBSU051



SBSU051P



SBSU069



SBSU070

| SIDE LIGHT BRACKETS | | |
|------------------------------------------------------|-----------------------------------------------------|---------------|
| HEIGHT(c) 250 mm - DEPTH 500 mm - LENGTH (b) 1000 mm | | |
| Model | Description | Compatibility |
| SBSU039 | Light support bracket for Mercedes side fender | Ategos Actros |
| SBSU040 | Side light brackets | DAF |
| SBSU049 | Side light brackets for FRP or Aluminium trucks | |
| SBSU049P | Side light brackets for FRP folded aluminium trucks | |
| SBSU051 | Brackets for LEDs | DAF |
| SBSU051P | Folded brackets for LEDs | DAF |
| SBSU069 | Folded brackets for LEDs | |
| SBSU070 | Riveted bracket for LED lights | |



| CLEARANCE LIGHT BRACKETS | |
|------------------------------------------------------|-----------------------------------------------------|
| HEIGHT(c) 250 mm - DEPTH 500 mm - LENGTH (b) 1000 mm | |
| Model | Description |
| SBSU058 | Universal bracket for clearance lights right / left |



| SUPPORT BRACKETS FOR LICENCE PLATES | |
|------------------------------------------------------|----------------------------------------------------|
| HEIGHT(c) 250 mm - DEPTH 500 mm - LENGTH (b) 1000 mm | |
| Model | Description |
| SBSU062 | Universal bracket for reflective or license plates |

SPARE PARTS



| Model | Description |
|-------------|-------------------------------------------------|
| COSU004 | Door stopper guide support |
| COSU005 | Folder door stop |
| VEVER24 | Butterfly lock with key |
| 8173050 | Butterfly lock cam, large model |
| 8173030 | Butterfly lock cam, medium model (for PGC0030R) |
| 6388-210 | Reinforced polyamide hinge, large model |
| 6388-200 | Reinforced polyamide hinge, medium model |
| G150071 | Galvanized steel hinge with lubricator |
| LT377 | Box seal |
| HP4610051 | Clip-on tubular rubber seal |
| VEVER28 | Pad lockable Stainless steel lock |
| VEVER17 | Galvanized spring lock |
| 15555.MNC | Pad lockable (PVC/ZAMAC) lock |
| 15556.MNC.S | 3 point pad lockable (PVC/ZAMAC) lock |
| VEVER14 | Stainless steel fasteners with key |
| 3343680 | Galvanized steel toggle with strike plate |

Volume
=
Rate
declining



RUBBOLITE



FARBA UNISTO



COBO



VIGNAL LC7



VIGNAL LC8



HELLA PAMEL



VIGNAL LC10



TRUCK LITE PP



VIGNAL LC11 LED



SIM



OLSA 725



VIGNAL LC5



VIGNAL LC9



SIM SCANIA



RUBBOLITE M462



GRRE001P



GRV0002P



GRPE001P



GRRE005P



GRME001P



GRPE002P



GRME004P



GRRE003P



GRME003P



GRF0001P



GRF0002P



GREE002P



GRMI001P



GRSC001P



GRIV004P



GRV0001P



GRME002P



GRIV002P



GRIV001P



GRIV003P

LIGHT GUARDS

PRODUCTS CONFORM TO THE HIGHWAY CODE

All our guards are subject to a UTAC photometric control report

| Brand | Vehicle | Light reference | Model (on the light) | Model (on the underpin bar) |
|---------------------------------|------------------------------------------|--------------------|----------------------|-----------------------------|
| RENAULT | Mascot / Master Pro | VIGNAL LC5 | GRRE001P | GRRE002P |
| | Maxity | VIGNAL LC5 | GRRE001P | GRRE003P |
| | D --> 18 T | VIGNAL LC10 LED | GRV0002P | - |
| | D | VIGNAL LC5 | GRRE001P | |
| | Midlum | | GRRE001P | |
| | Master > 2013 | | GRRE001P | |
| | Master < 2013 | OLSA 725 | GRPE001P | |
| | Premium | VIGNAL LC9 | GRRE005P | |
| | Kerax | | | |
| Magnum | | | | |
| K-C430-C340-C380-C280-C920-C480 | | | | |
| NISSAN | Atleon-NT 500 | VIGNAL LC5 | GRRE001P | - |
| | Cabstar | VIGNAL LC5 | GRRE001P | GRRE003P |
| CITROËN | Jumper < 2013 | OLSA 725 | GRPE001P | - |
| | Jumper > 2013 | VIGNAL LC5 | GRPE002P | |
| PEUGEOT | Boxer < 2013 | OLSA 725 | GRPE001P | - |
| | Boxer > 2013 | VIGNAL LC5 | GRPE002P | |
| FIAT | Ducato < 2013 | OLSA 725 | GRPE001P | - |
| | Ducato > 2013 | VIGNAL LC5 | GRPE002P | |
| OPEL | Movano < 2013 | OLSA 725 | GRPE001P | - |
| | Movano > 2013 | VIGNAL LC5 | GRRE001P | |
| FORD | Transit | RUBBOLITE | GRF0001P | - |
| | Transit - châssis cabine (début 2014) | FARBA UNISTOP3 | GRF0002P | |
| MERCEDES | Sprinter | VIGNAL LC8 | GRME001P | - |
| | Sprinter > 2018 | VIGNAL LC11 LED | GRME004P | |
| | Atego < 2014 | HELLA PAMEL | GRME002P | |
| | Axor < 2014 | | | |
| | Actros < 2014 | | | |
| | Antos, Arocs, Atego, Actros depuis EURO6 | TRUCK LITE PP-20TF | GRME003P | |
| VOLKSWAGEN | Crafter | VIGNAL LC8 | GRME001P | - |
| MITSUBISHI | Canter | SIM | GRMI001P | - |
| DAF | CF - XF | VIGNAL LC8 | GRME001P | - |
| | CF - XF | VIGNAL LC7 | GRIV004P | |
| | LF | VIGNAL LC5 | GRRE001P | |
| IVECO | Daily | COBO 725 | GRIV001P | GRIV002P & GRIV003P (rect) |
| | | VIGNAL LC15 LED | GRIV005P | - |
| | Eurocargo 60E-65E-75E-80EL | OLSA 725 | GRPE001P | - |
| | Eurocargo 60E-65E-75E-80EL | VIGNAL LC5 | GRRE001P | |
| | Eurocargo 60E-65E-75E-80EL | VIGNAL LC7 | GRIV004P | |
| | Stralis | | | |
| | Eurotrakker | | | |
| MAN | TGE, TGA, TGL, TGM, TGS | VIGNAL LC8 | GRME001P | - |
| SCANIA | Serie P & R | SIM | GRSC001P | - |
| | | | GRME001P | |
| VOLVO | FE - FL (carrier truck) | VIGNAL LC5 | GRRE001P | - |
| | FL (tractor truck) | VIGNAL LC9 | GRRE005P | |
| | FM - FH | | GRV0002P | |
| | FM | | VIGNAL LC10 LED | |
| | - | RUBBOLITE M462 | GRV0001P | |
| SEMI-TRUCK | | | CONTACT US | |
| OTHER HGV | | | CONTACT US | |

ALUMINIUM ROOF RACK «GALIX»

- TIG welded tubular aluminium structure
- Roof rack fitted in compliance with manufacturer's recommendations
- Rear loading on polyamide rollers
- Central gangway in non-slip aluminium
- Side guardrails and deflector

- Aluminium Acces ladder for back door, attached without drilling

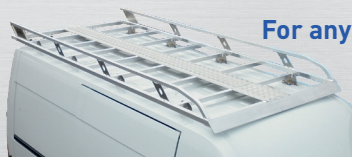


**ROBUST, LIGHT, AERODYNAMIC
EXCELLENT AIR PENETRATION
COEFFICIENT**

| | Citroën | Fiat | Ford | Iveco | Man | Mercedes | Nissan | Opel | Peugeot | Renault | Volkswagen |
|---------------------------------|-------------------------|--------------------|------------------------------------|-------------------------------|--------|-------------|--------------------|----------------|-----------------------|-----------------------|------------------------|
| Small utility vehicle | Nemo | Fiorino | | | | Citan L0 | | | Bipper | Kangoo L0 | |
| | Berlingo L1 | Doblo L1 | Transit Connect Transit Courier L1 | Massif L1 | | Citan L1 | NV200 | Combo Cargo L1 | Partner L1 | Kangoo L1 Express XJK | Caddy L1 |
| | Berlingo L2 | Doblo L2 | Transit Connect L2 | Massif L2 | | Citan L2 | | Combo Cargo L2 | Partner L2 | Kangoo L2 | Caddy L2 |
| Medium utility vehicle | Jumpy / Space Tourer L1 | Scudo / Talento L1 | Transit Custom L1 | | | Vito L1 | Primastar NV300 L1 | Vivaro L1 | Expert / Traveller L1 | Trafic L1 | Transporter T5 / T6 L1 |
| | Jumpy / Space Tourer L2 | Scudo / Talento L2 | Transit Custom L2 | | | Vito L2 | Primastar NV300 L2 | Vivaro L2 | Expert / Traveller L2 | Trafic L2 | Transporter T5 / T6 L2 |
| | | | | | | Vito L3 | | | Expert / Traveller L3 | | |
| Large utility vehicle | Jumper L1 | Ducato L1 | | Daily V7H1 V9H2 | | Sprinter L1 | NV400 L1 | Movano L1 | Boxer L1 | Master L1 | |
| | Jumper L2 | Ducato L2 | Transit 2T L2 | Daily V8H1 V9H1 V10H2 V11H2 | TGE L3 | Sprinter L2 | NV400 L2 | Movano L2 | Boxer L2 | Master L2 | Crafter L3 |
| | Jumper L3 | Ducato L3 | Transit 2T L3 | Daily V12H2 V13H3 | TGE L4 | Sprinter L3 | NV400 L3 | Movano L3 | Boxer L3 | Master L3 | Crafter L4 |
| | Jumper L4 | Ducato L4 | Transit 2T L4 | Daily V15H2 V16H2 V17H3 V18H3 | TGE L5 | Sprinter L4 | NV400 L4 | Movano L4 | Boxer L4 | Master L4 | Crafter L5 |
| | | | | Daily V17H2 | | | | | | | |
| Large utility vehicle Polyester | | | | | | | NV400 H3 | Movano H3 | | Master H3 | |



**For any purchase of a ladder only :
Consult us**



EXTRAS ON DEMAND

- Reversing camera protection
- Move back the roller of 80mm
- Welded tie-down rings (approximately 10)
- Rear loading roller modification (double, half)
- Extra gangway
- Complete gangway



ALUMINIUM ROOF RACK «GALIX»



BASE VEHICLE

Panel van, Kangoo, Trafic, Master

Models

Roof rack for Express (XJK), no gangway, no ladder (from 2021 onwards):

L1H1 Roof rack (GNXJKL1H1)

Roof rack for Kangoo (XFK), no ladder (from 2021) :

L1H1 Roof rack (GNXFKL1H1)

L2H1 Roof rack (GNXFKL2H1)

Roof rack for a Kangoo (x61) no gangway, no ladder (from 2010 to 2021):

AVAILABLE RANGE

Roof rack for a Trafic (X83) from 2001 to 2014:

AVAILABLE RANGE

Roof rack for a Trafic (X82) 2014:

L1H1 Roof rack (GNX82L1H1)

With tailgate (GNX82L1H1Z1)

L1H2 Roof rack (GNX82L1H2)*

L2H1 Roof rack (GNX82L2H1)

With tailgate (GNX82L2H1Z1)

L2H2 Roof rack (GNX82L2H2)*

Ladder (ECX82H1)

No Ladder

Ladder (ECX82H2)

Ladder (ECX82H1)

No Ladder

Ladder (ECX82H2)

Roof rack Master (X70) from 2000 to 2010 :

AVAILABLE RANGE

Roof rack Master (X62) from 2010 :

Attention! H3 models require installation in our workshops

L1H1 Roof rack (GNX62L1H1)

L1H2 Roof rack (GNX62L1H2)

L2H2 Roof rack (GNX62L2H2)

L2H3 Roof rack (GALX62L2H3)

L3H2 Roof rack (GNX62L3H2)

L3H3 Roof rack (GALX62L3H3)

L4H2 Roof rack (GNX62L4H2)

L4H3 Roof rack (GALX62L4H3)

Ladder (ECX62H1)

Ladder (ECX62H2H3)

Ladder (ECX62H2H3)

Ladder (ECX62H2H3)

Ladder (ECX62H2H3)

Ladder (ECX62H2H3)

Ladder (ECX62H2H3)

Ladder (ECX62H2H3)

*Consult us

For any purchase of a ladder only : consult us.



ALUMINIUM ROOF RACK «GALIX»



BASE VEHICLE

Panel van, Bipper, Partner, Expert, Boxer

Models

Roof rack Bipper without gangway, no ladder from 2008:

| | | |
|------|-----------|--------------|
| L1H1 | Roof rack | (GNNEMOL1H1) |
|------|-----------|--------------|

Roof rack Partner without gangway (B9), no ladder from 2008:

| | | |
|------|---------------|--------------|
| L1H1 | Roof rack | (GNB9L1H1) |
| | With tailgate | (GNB9L1H1) |
| | With girafon | (GNB9L1H1Z3) |
| L2H1 | Roof rack | (GNB9L2H1) |

Roof rack Partner sans passerelle (K9), no ladder from the end of 2018:

| | | |
|------|-----------|------------|
| L1H1 | Roof rack | (GNK9L1H1) |
| L2H1 | Roof rack | (GNK9L2H1) |

Roof rack Expert (G9) from 2007 to 2016 (wheelbase 3000 and 3122):

AVAILABLE RANGE

Roof rack Expert or Traveller (K0) from june 2016 (wheelbase 2925 and 3275):

| | | | |
|------|---------------|---------------|-----------------|
| L1H1 | Roof rack | (GNK0L1H1) | Ladder (ECK0H1) |
| | With tailgate | (GNK0L1H1Z1) | No Ladder |
| L2H1 | Roof rack | (GNK0L2H1) | Ladder (ECK0H1) |
| | With tailgate | (GNK0L2H1Z1)* | No Ladder |
| L3H1 | Roof rack | (GNK0L3H1) | Ladder (ECK0H1) |
| | With tailgate | (GNK0L3H1Z1)* | No Ladder |

Roof rack Boxer (X250) from 2006:

| | | | |
|------|-----------|--------------|-------------------|
| L1H1 | Roof rack | (GNX250L1H1) | Ladder (ECX250H1) |
| L1H2 | Roof rack | (GNX250L1H2) | Ladder (ECX250H2) |
| L2H1 | Roof rack | (GNX250L2H1) | Ladder (ECX250H1) |
| L2H2 | Roof rack | (GNX250L2H2) | Ladder (ECX250H2) |
| L3H2 | Roof rack | (GNX250L3H2) | Ladder (ECX250H2) |
| L3H3 | Roof rack | (GNX250L3H3) | Ladder (ECX250H3) |
| L4H2 | Roof rack | (GNX250L4H2) | Ladder (ECX250H2) |
| L4H3 | Roof rack | (GNX250L4H3) | Ladder (ECX250H3) |

*Consult us

For any purchase of a ladder only : consult us.



ALUMINIUM ROOF RACK «GALIX»



O P E L



BASE VEHICLE

Panel van, Combo Cargo, Vivaro, Movano

Models

Roof rack Combo without gangway (DOCA), no ladder 2011 - 2018 :

AVAILABLE RANGE

Roof rack Combo without gangway (K9), no ladder after the end of 2018:

| | | |
|------|-----------|------------|
| L1H1 | Roof rack | (GNK9L1H1) |
| L2H1 | Roof rack | (GNK9L2H1) |

Roof rack Vivaro (X83) from 2001 to 2014:

AVAILABLE RANGE

Roof rack Vivaro (X82) 2014:

AVAILABLE RANGE

Roof rack Vivaro (K0) after mid-2019:

| | | | |
|------|---------------|---------------|-----------------|
| L1H1 | Roof rack | (GNK0L1H1) | Ladder (ECK0H1) |
| | With tailgate | (GNK0L1H1Z1) | No Ladder |
| L2H1 | Roof rack | (GNK0L2H1) | Ladder (ECK0H1) |
| | With tailgate | (GNK0L2H1Z1)* | No Ladder |
| L3H1 | Roof rack | (GNK0L3H1) | Ladder (ECK0H1) |
| | With tailgate | (GNK0L3H1Z1)* | No Ladder |

Roof rack Movano (X62):

Attention! H3 models require installation in our workshop

| | | | |
|------|-----------|--------------|--------------------|
| L1H1 | Roof rack | (GNX62L1H1) | Ladder (ECX62H1) |
| L1H2 | Roof rack | (GNX62L1H2) | Ladder (ECX62H2H3) |
| L2H2 | Roof rack | (GNX62L2H2) | Ladder (ECX62H2H3) |
| L2H3 | Roof rack | (GALX62L2H3) | Ladder (ECX62H2H3) |
| L3H2 | Roof rack | (GNX62L3H2) | Ladder (ECX62H2H3) |
| L3H3 | Roof rack | (GALX62L3H3) | Ladder (ECX62H2H3) |
| L4H2 | Roof rack | (GNX62L4H2) | Ladder (ECX62H2H3) |
| L4H3 | Roof rack | (GALX62L4H3) | Ladder (ECX62H2H3) |

Roof rack on Movano (X250) from 2021 :

AVAILABLE RANGE

*Consult us

For any purchase of a ladder only : consult us.



ALUMINIUM ROOF RACK «GALIX»



BASE VEHICLE

Panel van, Caddy, Transporter T5, Crafter

Models

Roof rack on Caddy (Caddy) without gangway, no ladder from 2004 to 2020 :

| | | |
|------|---------------|------------------|
| L1H1 | Roof rack | (GALCADDYL1H1) |
| | With tailgate | (GALCADDYL1H1Z1) |
| L2H1 | Roof rack | (GALCADDYL2H1) |
| | With tailgate | (GALCADDYL2H1Z1) |

Roof rack on Caddy (2021) :

Consult us

Roof rack on Transporter T5 et T6 from 2003:

| | | | |
|------|---------------|------------------|-------------------------------|
| L1H1 | Roof rack | (GALTRT5L1H1) | Ladder with drilling (EC5BAR) |
| | With tailgate | (GALTRT5L1H1Z1)* | No Ladder |
| L2H1 | Roof rack | (GALTRT5L2H1)* | Ladder with drilling (EC5BAR) |
| | With tailgate | (GALTRT5L2H1Z1)* | No Ladder |

Roof rack Crafter (906) from 2006 to 2017:

| | | | |
|------|-----------|-------------|------------------|
| L1H1 | Roof rack | (GN906L1H1) | Ladder (EC906H1) |
| L1H2 | Roof rack | (GN906L1H2) | Ladder (EC906H2) |
| L2H1 | Roof rack | (GN906L2H1) | Ladder (EC906H1) |
| L2H2 | Roof rack | (GN906L2H2) | Ladder (EC906H2) |
| L3H2 | Roof rack | (GN906L3H2) | Ladder (EC906H2) |
| L4H2 | Roof rack | (GN906L4H2) | Ladder (EC906H2) |

Roof rack Crafter from 2017:

| | | | |
|------|-----------|----------------|---------------------|
| L3H2 | Roof rack | (GNCRAF17L3H2) | Ladder (ECCRAF17H2) |
| L3H3 | Roof rack | (GNCRAF17L3H3) | Ladder (ECCRAF17H3) |
| L4H3 | Roof rack | (GNCRAF17L4H3) | Ladder (ECCRAF17H3) |

*Consult us

For any purchase of a ladder only : consult us.



ALUMINIUM ROOF RACK «GALIX»



BASE VEHICLE

Panel van, Citan, Vito, Sprinter

Models

Roof rack Citan (X61) without gangway, no ladder from 2003 to 2021:

| | | |
|------|---------------|----------------|
| L0H1 | Roof rack | (GNX61L0H1) |
| | With tailgate | (GNX61L0H1Z1) |
| L1H1 | Roof rack | (GNX61L1H1) |
| | With tailgate | (GNX61L1H1Z1)* |
| | With Girafon | (GNX61L1H1Z3)* |
| L2H1 | Roof rack | (GNX61L2H1) |

Roof rack on Citan (XFK) from 2021 :

AVAILABLE RANGE

Roof rack Vito (Vito) from 2004:

| | | | |
|------|---------------|----------------|-------------------|
| L1H1 | Roof rack | (GNVITOL1H1) | Ladder (ECVITOH1) |
| | With tailgate | (GNVITOL1H1Z1) | No Ladder |
| L2H1 | Roof rack | (GNVITOL2H1) | Ladder (ECVITOH1) |
| | With tailgate | (GNVITOL2H1Z1) | No Ladder |
| L3H1 | Roof rack | (GNVITOL3H1) | Ladder (ECVITOH1) |
| | With tailgate | (GNVITOL3H1Z1) | No Ladder |

Roof rack Sprinter (906) from 2006:

| | | | |
|-------------|-----------|-------------|------------------|
| L1H1 (32N) | Roof rack | (GN906L1H1) | Ladder (EC906H1) |
| L1H2 (32S) | Roof rack | (GN906L1H2) | Ladder (EC906H2) |
| L2H1 (37N) | Roof rack | (GN906L2H1) | Ladder (EC906H1) |
| L2H2 (37S) | Roof rack | (GN906L2H2) | Ladder (EC906H2) |
| L3H2 (43S) | Roof rack | (GN906L3H2) | Ladder (EC906H2) |
| L4H2 (43SL) | Roof rack | (GN906L4H2) | Ladder (EC906H2) |

Roof rack Sprinter (907 r/w drive) from 2018:

| | | | |
|------|-----------|-------------|------------------|
| L1H1 | Roof rack | (GN907L1H1) | Ladder (EC907H1) |
| L2H1 | Roof rack | (GN907L2H1) | Ladder (EC907H1) |
| L2H2 | Roof rack | (GN907L2H2) | Ladder (EC907H2) |
| L3H2 | Roof rack | (GN907L3H2) | Ladder (EC907H2) |
| L4H2 | Roof rack | (GN907L4H2) | Ladder (EC907H2) |

Roof rack Sprinter (910 f/w drive) from 2018:

| | | | |
|------|-----------|-------------|------------------|
| L1H1 | Roof rack | (GN910L1H1) | Ladder (EC910H1) |
| L1H2 | Roof rack | (GN910L1H2) | Ladder (EC910H2) |
| L2H1 | Roof rack | (GN910L2H1) | Ladder (EC910H1) |
| L2H2 | Roof rack | (GN910L2H2) | Ladder (EC910H2) |

*Consult us

For any purchase of a ladder only : consult us.



ALUMINIUM ROOF RACK «GALIX»

IVECO



BASE VEHICLE

Panel van, Massif, Daily

Models

Roof rack Daily (DA12) from 2006 to 2014:

| | | | |
|-------|-----------|----------------|-------------------|
| V7H1 | Roof rack | (GALDA12V7H1) | Ladder (ECDA12H1) |
| V8H1 | Roof rack | (GALDA12V8H1) | Ladder (ECDA12H1) |
| V9H2 | Roof rack | (GALDA12V9H2) | Ladder (ECDA12H2) |
| V10H2 | Roof rack | (GALDA12V10H2) | Ladder (ECDA12H2) |
| V12H2 | Roof rack | (GALDA12V12H2) | Ladder (ECDA12H2) |
| V15H2 | Roof rack | (GALDA12V15H2) | Ladder (ECDA12H2) |

Roof rack Daily (DA14) from 2014:

| | | | |
|-------|-----------|-----------------|-------------------|
| V7H1 | Roof rack | (GALDA14V7H1) | Ladder (EC6BAR) |
| V9H1 | Roof rack | (GALDA14V9H1) | Ladder (EC6BAR) |
| V11H2 | Roof rack | (GALDA14V11H2) | Ladder (ECDA14H2) |
| V12H2 | Roof rack | (GALDA14V12H2) | Ladder (ECDA14H2) |
| V16H2 | Roof rack | (GALDA14V16H2) | Ladder (ECDA14H2) |
| V17H2 | Roof rack | (GALDA14V17H2) | Ladder (ECDA14H2) |
| V18H2 | Roof rack | (GALDA14V18H2)* | Ladder (ECDA14H2) |



BASE VEHICLE

TGE

Models

Roof rack TGE from 2017:

| | | | |
|------|-----------|----------------|--------------------|
| L3H2 | Roof rack | (GNTGEL3H2) | Ladder (ECTGE17H2) |
| L3H3 | Roof rack | (GNTGE17L3H3) | Ladder (ECTGE17H3) |
| L4H3 | Roof rack | (GNTGE17L4H3) | Ladder (ECTGE17H3) |
| L5H3 | Roof rack | (GNTGE17L5H3)* | Ladder (ECTGE17H3) |

*Consult us

For any purchase of a ladder only : consult us.



ALUMINIUM ROOF RACK «GALIX»



CITROËN



BASE VEHICLE

Panel van, Nemo, Berlingo, Jumpy, Jumper

Models

Roof rack Nemo without gangway, no ladder from de 2008:

L1H1 Standard roof rack (GNNEMOL1H1)

Roof rack Berlingo without gangway (B9), no ladder from 2008:

AVAILABLE RANGE

Roof rack Berlingo without gangway (K9), no ladder from the end of 2018:

L1H1 Roof rack (GNK9L1H1)

L2H1 Roof rack (GNK9L2H1)

Roof rack Jumpy (G9) from 2007 to 2016 (wheelbase 3000 and 3122):

AVAILABLE RANGE

Roof rack JUMPY ou SpaceTourer (K0) from 2016 (wheelbase 2925 and 3275):

L1H1 Roof rack (GNK0L1H1) Ladder (ECK0H1)

With tailgate (GNK0L1H1Z1)* No Ladder

L2H1 Roof rack (GNK0L2H1) Ladder (ECK0H1)

With tailgate (GNK0L2H1Z1)* No Ladder

L3H1 Roof rack (GNK0L3H1) Ladder (ECK0H1)

With tailgate (GNK0L3H1Z1)* No Ladder

Roof rack Jumper (X250) from 2006:

L1H1 Roof rack (GNX250L1H1) Ladder (ECX250H1)

L1H2 Roof rack (GNX250L1H2) Ladder (ECX250H2)

L2H1 Roof rack (GNX250L2H1) Ladder (ECX250H1)

L2H2 Roof rack (GNX250L2H2) Ladder (ECX250H2)

L3H2 Roof rack (GNX250L3H2) Ladder (ECX250H2)

L3H3 Roof rack (GNX250L3H3) Ladder (ECX250H3)

L4H2 Roof rack (GNX250L4H2) Ladder (ECX250H2)

L4H3 Roof rack (GNX250L4H3) Ladder (ECX250H3)

*Consult us

For any purchase of a ladder only : consult us.



ALUMINIUM ROOF RACK «GALIX»



BASE VEHICLE

*Panel van, Transis Connect,
Transit Custom, Transit*

Models

Roof rack Transit Courier no ladder from 2014

| | | |
|------|-----------|--------------|
| L1H1 | Roof rack | (GNCOURL1H1) |
|------|-----------|--------------|

Roof rack Transit Connect without gangway (TRC014) no ladder from the end of 2013:

| | | |
|------|---------------|--------------------|
| L1H1 | Roof rack | (GALTRC014L1H1) |
| | With tailgate | (GALTRC014L1H1Z1)* |
| L2H1 | Roof rack | (GALTRC014L2H1) |
| | With tailgate | (GALTRC014L2H1Z1)* |

Roof rack Transit (FT06) from 2006 to 2013:

| | | | |
|------|---------------|-----------------|-------------------|
| L1H1 | Roof rack | (GNTRCUL1H1) | Ladder (ECTRCUH1) |
| | With tailgate | (GNTRCUL1H1Z1)* | No Ladder |
| L1H2 | Roof rack | (GNTRCUL1H2) | Ladder (EC7BAR) |
| L2H1 | Roof rack | (GNTRCUL2H1) | Ladder (EC7BAR) |
| | With tailgate | (GNTRCUL2H1Z1) | No Ladder |
| L2H2 | Roof rack | (GNTRCUL2H2) | Ladder (ECTRCUH1) |

Roof rack Transit (FT06) from 2006 to 2013:

AVAILABLE RANGE

Roof rack Transit (FT14 from 2014):

| | | | |
|------|-----------|---------------|-------------------|
| L2H2 | Roof rack | (GALFT14L2H2) | Ladder (ECFT14H2) |
| L2H3 | Roof rack | (GALFT14L2H3) | Ladder (ECFT14H3) |
| L3H2 | Roof rack | (GNFT14L3H2) | Ladder (ECFT14H2) |
| L3H3 | Roof rack | (GALFT14L3H3) | Ladder (ECFT14H3) |
| L4H3 | Roof rack | (GALFT14L4H3) | Ladder (ECFT14H3) |

*Consult us

For any purchase of a ladder only : consult us.



ALUMINIUM ROOF RACK «GALIX»



BASE VEHICLE

Panel van, NV200, Primastar, NV400

Models

Roof rack Nv200 without gangway (NV200), no ladder from 2010:

| | | |
|----|---------------|---------------|
| L1 | Roof rack | [GNNV200] |
| | With tailgate | [GALNV200Z1]* |

Roof rack Primastar (X83) from 2001 to 2014:

AVAILABLE RANGE

Roof rack Nv300 (X82) 2014:

| | | | |
|------|---------------|---------------|------------------|
| L1H1 | Roof rack | [GNX82L1H1] | Ladder (ECX82H1) |
| | With tailgate | [GNX82L1H1Z1] | No Ladder |
| L1H2 | Roof rack | [GNX82L1H2]* | Ladder (ECX82H2) |
| L2H1 | Roof rack | [GNX82L2H1] | Ladder (ECX82H1) |
| | With tailgate | [GNX82L2H1Z1] | No Ladder |
| L2H2 | Roof rack | [GNX82L2H2]* | Ladder (ECX82H2) |

Roof rack Nv400 (X62) from 2010:

Attention! H3 models require installation in our workshops

| | | | |
|------|-----------|--------------|--------------------|
| L1H1 | Roof rack | [GNX62L1H1] | Ladder (ECX62H1) |
| L1H2 | Roof rack | [GNX62L1H2] | Ladder (ECX62H2H3) |
| L2H2 | Roof rack | [GNX62L2H2] | Ladder (ECX62H2H3) |
| L2H3 | Roof rack | [GALX62L2H3] | Ladder (ECX62H2H3) |
| L3H2 | Roof rack | [GNX62L3H2] | Ladder (ECX62H2H3) |
| L3H3 | Roof rack | [GALX62L3H3] | Ladder (ECX62H2H3) |
| L4H2 | Roof rack | [GNX62L4H2] | Ladder (ECX62H2H3) |
| L4H3 | Roof rack | [GALX62L4H3] | Ladder (ECX62H2H3) |

*Consult us

For any purchase of a ladder only : consult us.



ALUMINIUM ROOF RACK «GALIX»

FIAT



BASE VEHICLE

Panel van, Fiorino, Doblo Cargo, Scudo, Ducato

Models

Roof rack Fiorino without gangway, no ladder from 2008:

| | | |
|------|-----------|--------------|
| L1H1 | Roof rack | (GNNEMOL1H1) |
|------|-----------|--------------|

Roof rack Doblo without gangway (DOCA), no ladder from 2010:

| | | |
|------|---------------|-----------------|
| L1H1 | Roof rack | (GNDOCAL1H1) |
| | With tailgate | (GNDOCAL1H1Z1)* |
| | With girafon | (GALDOCAL1H1Z3) |
| L2H1 | Roof rack | (GNDOCAL2H1) |
| | With tailgate | (GNDOCAL2H1Z1)* |
| | With girafon | (GALDOCAL2H1Z3) |

Roof rack on Doblo III (K9), no ladder from 2022 :

| | | |
|------|-----------|------------|
| L1H1 | Roof rack | (GNK9L1H1) |
| L2H1 | Roof rack | (GNK9L2H1) |

Roof rack on Scudo III (K0) from 2021 :

| | | | |
|------|---------------|---------------|-----------------|
| L1H1 | Roof rack | (GNK0L1H1) | Ladder (ECK0H1) |
| | With tailgate | (GNK0L1H1Z1)* | No ladder |
| L2H1 | Roof rack | (GNK0L2H1) | Ladder (ECK0H1) |
| | With tailgate | (GNK0L2H1Z1)* | No ladder |
| L3H1 | Roof rack | (GNK0L3H1) | Ladder (ECK0H1) |
| | With tailgate | (GNK0L3H1Z1)* | No ladder |

Roof rack Scudo (G9) from 2007 to 2016:

AVAILABLE RANGE

Roof rack Talento (X82) 2016:

AVAILABLE RANGE

Roof rack Ducato (X250) from 2006:

| | | | |
|------|-----------|--------------|-------------------|
| L1H1 | Roof rack | (GNX250L1H1) | Ladder (ECX250H1) |
| L1H2 | Roof rack | (GNX250L1H2) | Ladder (ECX250H2) |
| L2H1 | Roof rack | (GNX250L2H1) | Ladder (ECX250H1) |
| L2H2 | Roof rack | (GNX250L2H2) | Ladder (ECX250H2) |
| L3H2 | Roof rack | (GNX250L3H2) | Ladder (ECX250H2) |
| L3H3 | Roof rack | (GNX250L3H3) | Ladder (ECX250H3) |
| L4H2 | Roof rack | (GNX250L4H2) | Ladder (ECX250H2) |
| L4H3 | Roof rack | (GNX250L4H3) | Ladder (ECX250H3) |

*Consult us

For any purchase of a ladder only : consult us.



CARPENTER'S ROOF RACK

- **TIG welded tubular aluminium structure**
- **Roof rack fitted in compliance with manufacturer's recommendations**
- **Suitable for loading with a forklift**
- **Rear loading on polyamide rollers**
- **Central gangway in non-slip aluminium**
- **Aluminium access ladder at the rear**



CONSULT US

INTERIOR GLASS RACKS

- Aluminium and stainless steel structure
- Vertical supports the length of the interior
- Rubber trimmed
- Options: shelves
- Supplied with 3 tie-down bars with straps
- Supplied with 3 removable and rough feet (450mm)



GLASS AND MIRROR RACK

- Aluminium and stainless steel structure
- Rubber trimmed
- Left/right side fixings (as required)
- Articulated interior supports with 15cm retractable brackets (20/25cm available)
- Movable anti-projection plate for rear wheels
- Supplied with 3 simple or automatic tie-down bars
- Markings conform to the Highway Code



ALL-PURPOSE RACK

- Aluminium and stainless steel structure
- Rubber trimmed
- Left/right side fixings (as required)
- 15cm stands, non folding
- Quick attach/detach system (5min)
- Supplied with 3 simple tie-down bars
- Markings conform to the Highway Code



INSTALLATION IN OUR WORKSHOP
RATE: CONTACT US



NEORALI

***The answer
to your body shop products***



CONTACT US !

contact@neorali.fr

www.neorali.fr

NEORALI

565 avenue Charles de Gaulle - 88300 NEUFCHATEAU

Tel. 03 29 94 14 75

English version
2023-1 SP

Non-contractual photographs - Assembled goods - Ex works



**FABRIQUÉ EN
FRANCE**